

## Estimating Time : Mixed

Sheet 3

Choose the appropriate time unit for each action / activity.

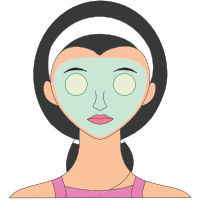
1) Working days in a week

- ☐ about 2 minutes
- ☐ about 18 hours
- ☐ about 5 days



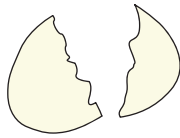
2) Standard facial

- ☐ about 2 minutes
- ☐ about an hour
- ☐ about 6 days



3) To crack open an egg

- ☐ about 4 seconds
- ☐ about 9 minutes
- ☐ about 5 hours



4) Spring break

- ☐ about 45 minutes
- ☐ about 10 hours
- ☐ about a week



5) A picnic

- ☐ about 2 hours
- ☐ about a day
- ☐ about a month



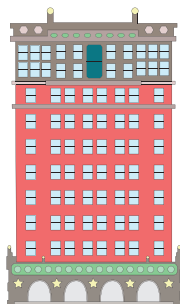
6) A birthday party

- ☐ about 8 minutes
- ☐ about 2 hours
- ☐ about 13 days



7) Walk up the stairs to reach 10th floor

- ☐ about 10 minutes
- ☐ about 19 hours
- ☐ about 5 days



8) Duration of a trimester

- ☐ about 3 months
- ☐ about 7 hours
- ☐ about 21 days



**Estimating Time : Mixed**

Sheet 3

Choose the appropriate time unit for each action / activity.

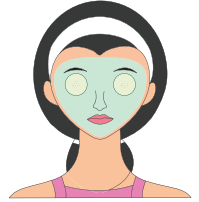
1) Working days in a week

- ☐ about 2 minutes
- ☐ about 18 hours
- ☒ about 5 days



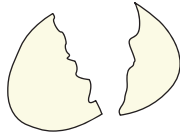
2) Standard facial

- ☐ about 2 minutes
- ☒ about an hour
- ☐ about 6 days



3) To crack open an egg

- ☒ about 4 seconds
- ☐ about 9 minutes
- ☐ about 5 hours



4) Spring break

- ☐ about 45 minutes
- ☐ about 10 hours
- ☒ about a week



5) A picnic

- ☐ about 2 hours
- ☒ about a day
- ☐ about a month



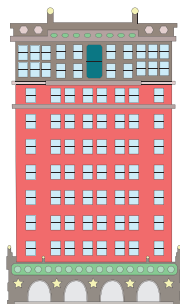
6) A birthday party

- ☐ about 8 minutes
- ☒ about 2 hours
- ☐ about 13 days



7) Walk up the stairs to reach 10th floor

- ☒ about 10 minutes
- ☐ about 19 hours
- ☐ about 5 days



8) Duration of a trimester

- ☒ about 3 months
- ☐ about 7 hours
- ☐ about 21 days

