

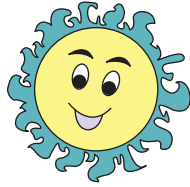
Estimating Time : Mixed

Sheet 1

Choose the appropriate time unit for each action / activity.

1) Duration of sunlight in a day

- ☐ about 50 seconds
- ☐ about 36 minutes
- ☐ about 9 hours



2) Christmas break

- ☐ about 6 hours
- ☐ about 2 weeks
- ☐ about 8 months



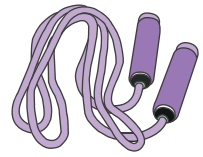
3) Home delivery of an online order

- ☐ about 4 hours
- ☐ about 2 days
- ☐ about 3 weeks



4) To skip 25 times

- ☐ about 7 minutes
- ☐ about 12 hours
- ☐ about 4 days



5) Duration of a lightning stroke

- ☐ about 11 hours
- ☐ about 3 seconds
- ☐ about 25 minutes



6) Spring season

- ☐ about a day
- ☐ about 2 weeks
- ☐ about 3 months



7) A family vacation

- ☐ about 34 minutes
- ☐ about 5 hours
- ☐ about 3 days



8) Duration of a show at a Planetarium

- ☐ about 45 minutes
- ☐ about 7 hours
- ☐ about 2 days



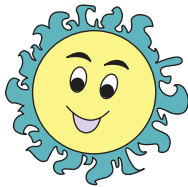
Estimating Time : Mixed

Sheet 1

Choose the appropriate time unit for each action / activity.

1) Duration of sunlight in a day

- ☐ about 50 seconds
- ☐ about 36 minutes
- ☒ about 9 hours



2) Christmas break

- ☐ about 6 hours
- ☒ about 2 weeks
- ☐ about 8 months



3) Home delivery of an online order

- ☐ about 4 hours
- ☒ about 2 days
- ☐ about 3 weeks



4) To skip 25 times

- ☒ about 7 minutes
- ☐ about 12 hours
- ☐ about 4 days



5) Duration of a lightning stroke

- ☐ about 11 hours
- ☒ about 3 seconds
- ☐ about 25 minutes



6) Spring season

- ☐ about a day
- ☐ about 2 weeks
- ☒ about 3 months



7) A family vacation

- ☐ about 34 minutes
- ☐ about 5 hours
- ☒ about 3 days



8) Duration of a show at a Planetarium

- ☒ about 45 minutes
- ☐ about 7 hours
- ☐ about 2 days

